



**SHEET METAL**

# **FABRICATION**

**API of NH**

428 Dow Hwy.  
Eliot, ME 03903  
(207) 703-2722

**Weekday Hours:** 7 a.m.-5 p.m.

**API of NH**

190 Zachary Rd.  
Manchester, NH 03109  
(603) 430-7820

**Weekday Hours:** 7 a.m.-5 p.m.

**Total Air Supply**

1 B St.  
Derry, NH 03038  
(603) 425-2709

**Weekday Hours:** 7 a.m.-5 p.m.

# mSupply Sheet Metal Fabrication

*Built right. Delivered Fast. Ready to install.*

Your HVAC system is only as good as its ductwork. That's why we focus on quality and reliability: Your project is worth it.

Throughout the Northeast, mSupply's sheet metal fabrication services are both fast and cost-effective, designed to save you time and money — and while being the partner you need for emergency or complex projects.

Our top-of-the-line, specialty equipment can make custom ductwork for any commercial or residential project. We deliver fully assembled ductwork, so your team can focus on what you do best: HVAC installation.

## SPIRAL DUCTWORK

The combination of our spiral machine equipment and our highly skilled team delivers custom quality in less time.

**Galvanized | Aluminum | Stainless steel**

### 10' ductwork

- 3"-24" - in stock
- Larger than 24" - made to order
- With or without flanges



## DOUBLE-WALL SPIRAL DUCTWORK

Rely on us for perfect spiral ductwork every time.

**Galvanized | Aluminum | Stainless steel**

### Lined interior

- 1"-3" insulation options
- Perforated or solid metal inner
- With or without flanges

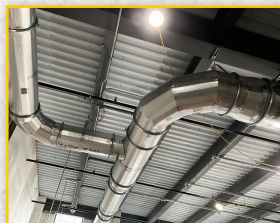


## CUSTOM ROUND DUCTWORK

Our experienced team handles even the most unique custom projects.

**Galvanized | Aluminum | Stainless steel**

- 90-degree elbows
- 45-degree elbows
- Tee
- End caps
- Saddles
- WYE
- TY
- Square-to-round
- Couplings
- ...and more!



## CUSTOM WELDED SQUARE AND ROUND DUCTWORK

Our teams use advanced machines to cut with speed and accuracy.

**Galvanized | Aluminum | Stainless steel | Black iron**

- Heavy gauges (from 20- through 10-gauge)

## CUSTOM SQUARE DUCTWORK

Our in-house plasma machines are perfect for accurate cuts that deliver specialty fittings.

**Galvanized | Aluminum | Stainless steel**

- 90-degree elbows
- 45-degree elbows
- Offset
- Transitions
- Tees
- End caps
- Parkers
- Volume dampers
- ...and more!



## COIL LINE DUCTWORK

Rely on our high-speed, state-of-the-art coil line for your standard ductwork needs.

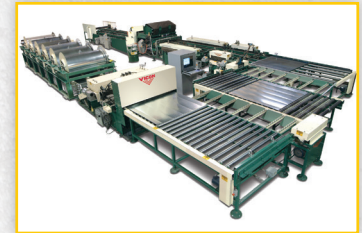
### Ductwork

- 4'
- 5'

### Liners

*(fiberglass and hospital-grade options available)*

- ½"
- 1"
- 1½"
- 2"



## ACCESSORIES

Count on us to provide custom-built accessories including:

- Fire dampers
- Fire and smoke dampers
- Control dampers
- Louvres
- Access doors
- ....and more!

